

Apr 29, 2015 - Present

CURRICULUM



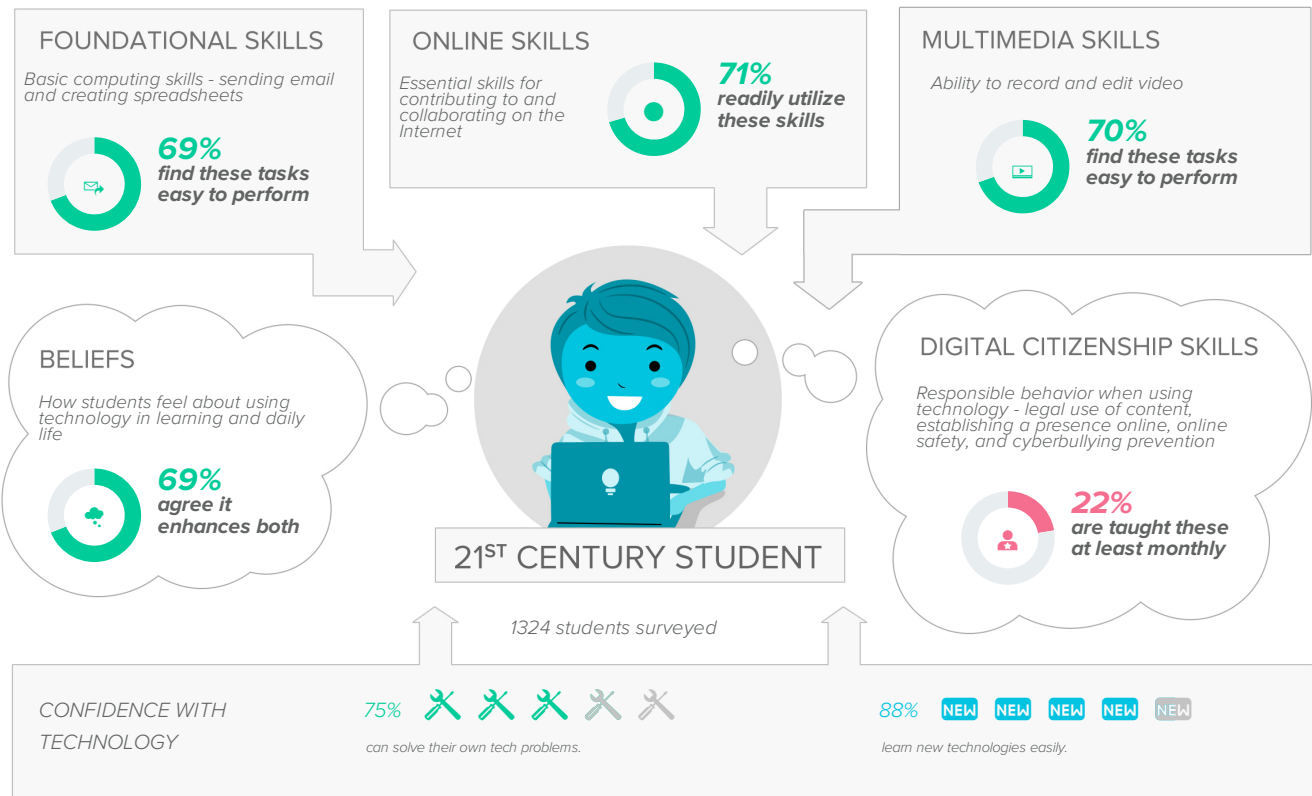
Although today's students are digital natives with many skills in social networking, the majority of them are not social learners with the ability to apply complex technology skills to everyday challenges.

Classrooms that prepare students for college and career seamlessly integrate technology into daily instruction in a way that intentionally scaffolds students' technology skills. Although today's students are digital natives with many skills in social networking, the majority of them are not social learners with the ability to apply complex technology skills to everyday challenges.

Furthermore, students' everyday experiences are seamlessly interwoven with digital devices and instant communication. In order to meet students "where they are," technology instruction must be infused in every subject area. Teachers are aware of this trend. According to a national Pew survey, 95% of students regularly use the Internet.

Given this, a modern curriculum must purposefully include incremental technology-infused skill acquisition. However, the design of every effective curriculum begins by considering the unique needs of the learners. Although students are comfortable tweeting and surfing the web, they still need support to use technology for productivity tasks such as creating spreadsheets and sending professional email.

Being aware of students' skill profiles with technology can greatly inform the development of a cohesive, integrated curriculum that allows students to build the technology skills sets necessary for college and career.



Contributing Factors

The factors that most contribute to the success of your organization include ...

STUDENT FOUNDATIONAL
SKILLS
EXEMPLARY



Historical data will appear here once you have collected year-over-year data.

STUDENT ONLINE SKILLS
ADVANCED



Historical data will appear here once you have collected year-over-year data.

STUDENT MULTIMEDIA SKILLS
ADVANCED



Historical data will appear here once you have collected year-over-year data.

STUDENT BELIEFS
ADVANCED



Historical data will appear here once you have collected year-over-year data.

CASE™ Score Legend



Beginning
800-899



Emerging
900-999



Proficient
1000-1099

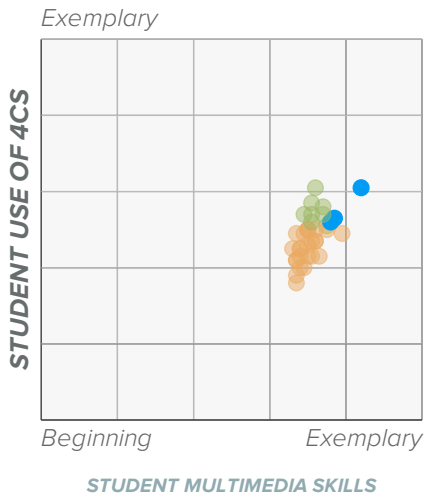
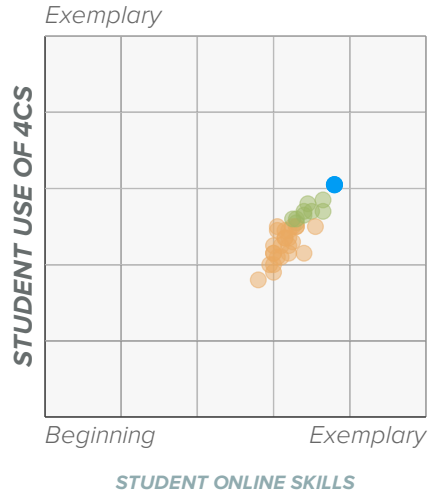
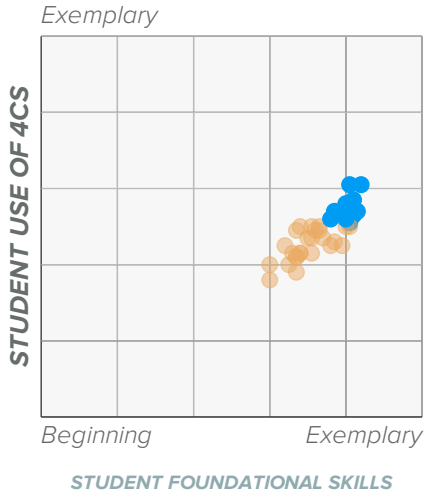


Advanced
1100-1199



Exemplary
1200-1300

Scatterplots



CASE™ Score Legend

● **Beginning**
800-899

● **Emerging**
900-999

● **Proficient**
1000-1099

● **Advanced**
1100-1199

● **Exemplary**
1200-1300

SCHOOL SCORECARD

Foundational Skills	● Exemplary
Online Skills	● Advanced
Multimedia Skills	● Advanced
Beliefs	● Advanced

CASE™ Score Legend ● **Beginning** 800-899 ● **Emerging** 900-999 ● **Proficient** 1000-1099 ● **Advanced** 1100-1199 ● **Exemplary** 1200-1300